

FIREPRO

FIRE PROTECTIVE BUILDING PRODUCTS

CI/SfB
 Tenmat FF102/25 – Aug 14

HEAD OFFICE: AUCKLAND (09) 579 0367
 CHRISTCHURCH (03) 379 9364
www.firepro.co.nz sales@firepro.co.nz

Product specifications can change. Contact us to ensure you have our latest datasheet

FIREPRO FF102/25

The FF102/25 Ventilated Fire Barrier is a high expansion intumescent seal offering industry leading performance as a ventilated cavity fire barrier. The product has undergone extensive fire testing and is suitable for use within the majority of construction types, enabling the versatile system to be specified with confidence and provide the installer with a simple, time saving and site friendly solution.

Product Description

The FF102/25 Ventilated Fire Barrier is a rigid, high expansion intumescent strip encased in aluminium foil. The FF102/25 can be mechanically fixed both horizontally and vertically within ventilated cavities behind rainscreen or cladding systems to act as a cavity fire barrier.

Product Dimensions

4.0 mm x 35 mm x 1000 mm

Max. Cavity

25mm

For cavity widths of 25 – 50 mm use FF102/50

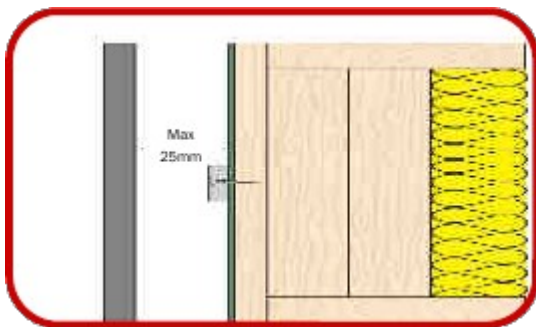


FF102/25 Ventilated Fire Barrier installed behind cladding system

Approved Applications

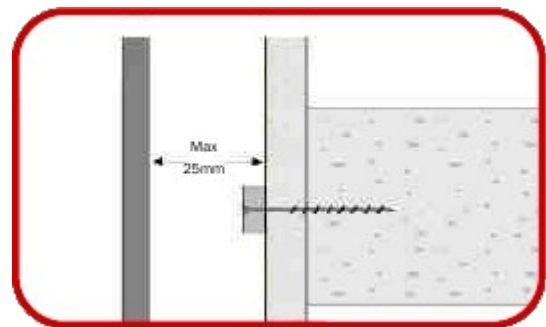
The FF102/25 Ventilated Fire Barrier has been independently fire tested and assessed by Chiltern International Fire for the applications below, for details on Fire Ratings for specific cavity and construction types please contact FIREPRO. Fire tested to BS476 Parts 20 & 22 for Fire Integrity.

FF102/25 Fixed to Combustible Timber Constructions



VFB Ref.	Assessed Construction Type	Fire Rating Horizontal	Fire Rating Vertical
FF102/25	Timber Frame	30	60

FF102/25 Fixed to Non-Combustible Constructions

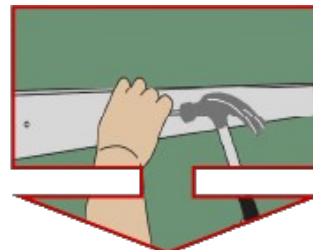
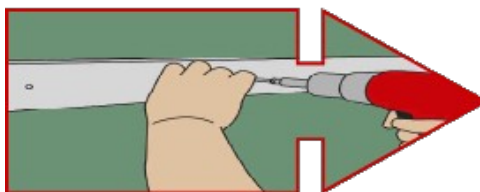


VFB Ref.	Assessed Construction Type	Fire Rating Horizontal	Fire Rating Vertical
FF102/25	Masonry / Concrete	120	120

FITTING INSTRUCTIONS

Fix FF102/25 with non-combustible screws (Trumpet / Countersunk type head only)

Product must be fixed at maximum 250mm centres

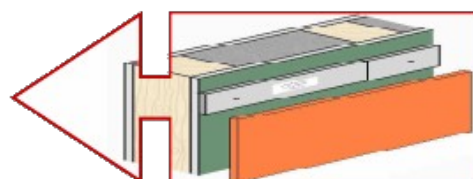
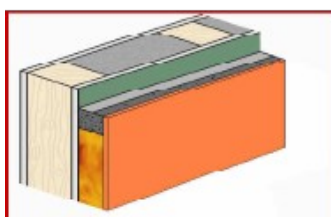


Alternatively the product can be nailed in position with suitable non-combustible nails.

Product must be fixed at maximum 250mm centres

Maximum remaining air gap to the back of the cladding is 21mm

Ensure Fire Barrier free to expand in a fire situation



Fixings must be along centre line of the FF102/25

Ensure label side is facing out into cavity

Adjacent lengths can be tightly butted

NOTE: The technical information and suggestions for use and application presented herein represent the best information available to us and are believed to be reliable. If used beyond the situations detailed on this datasheet we advise confirming their suitability before installation. All dimensions are nominal.

We reserve the right to make changes or to withdraw designs and products without notice.