

FIREPRO

CI/SfB

CAFCO 300 DATASHEET – Mar 14

FIRE PROTECTIVE BUILDING PRODUCTS

HEAD OFFICE: AUCKLAND (09) 579 0367

CHRISTCHURCH (03) 379 9364

www.firepro.co.nz sales@firepro.co.nz

Product specifications can change. Contact us to ensure you have our latest datasheet

CAFCO 300 FOR STEELWORK

INTRODUCTION

Cafco 300 is a gypsum/vermiculite based spray used to fire protect structural steel. It can be pumped in its slurry form for over 100M to the point of application. It is delivered to site in powder form and mixed with water to form a slurry in the spray machine.

APPLICATIONS

Fire protection of structural steelwork.

DESCRIPTION

Cafco 300 system comprises the gypsum/vermiculite powder as described above, together with an accelerator and retarder. The accelerator hastens set to enable a second coat to be applied the same day. The retarder prevents material from setting in the lines when left over night.

Also available is Bondseal for improving adhesion to difficult substrates.

Density

310 Kg/M3 without accelerator, 10% less when accelerator is used.

Appearance

White textured finish, can be trowelled flat.

PERFORMANCE

Cafco 300 complies with BS476:Part 21 for fire resistance and stickability, and BS476:Part 4 for non-combustability.

ASTM859 for air erosion suitability for use in air plenums.

VOC content: Nil. The product does not contain any ozone depleting substances in accordance with the Green Building Council of Australia Criteria EMI-9

SITWORK

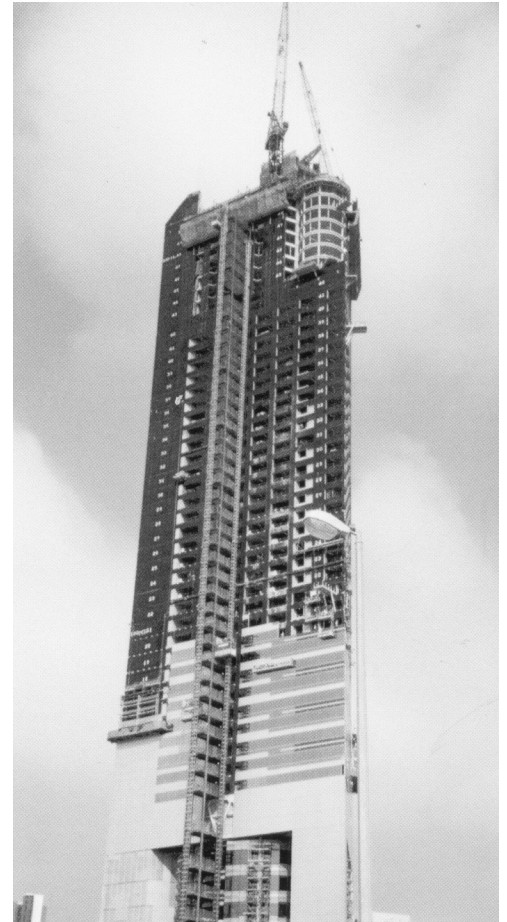
Steel surfaces must be clean and sound. Metal surfaces must be free of lime scale, paint, loose rust or any foreign matter. Porous surfaces require meshing before spraying.

MAINTENANCE

Physical damage up to an area of 0.3M2 can be easily repaired by hand trowelling; areas in excess of this should be sprayed.

ECONOMICS

Cafco 300 lightweight and ease of application make it amongst the most economic solutions to fire protection of structural steelwork.



Emirate Twin Tower Project, Tower TP10.
Tallest building in the Middle East -
fireproofed with Cafco 300

NOTE: The technical information and suggestions for use and application presented herein represent the best information available to us and are believed to be reliable. If used beyond the situations detailed on this datasheet we advise confirming their suitability before installation. All dimensions are nominal.

We reserve the right to make changes or to withdraw designs and products without notice.